



Columbia Wind Project

Columbia County Presentation
June 17, 2026



1

1

Agenda

- | | |
|-----------|---------------------------|
| 01 | About Us |
| 02 | Project Background |
| 03 | Projected Timeline |
| 04 | Common Questions |
| 05 | Conclude |



2

2

Alliant Energy: About Us

Serving customers with safe, reliable and resilient energy



440 Wisconsin communities served



500,000 electric customers
200,000 gas customers



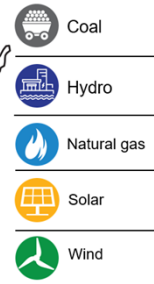
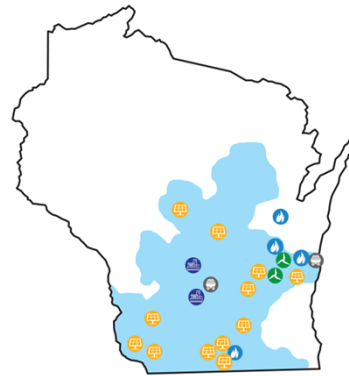
~1,300 dedicated employees



Top 5 largest regulated wind and solar owner-operator



Balanced energy mix including traditional and renewables sources



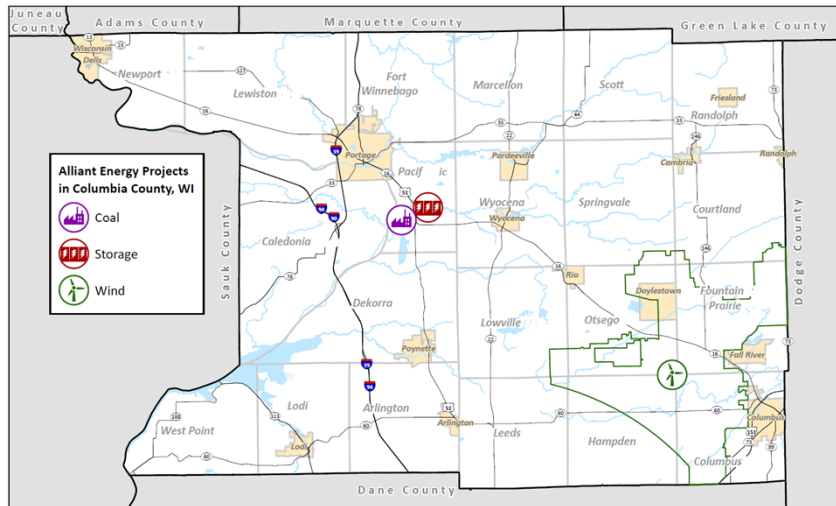
3



3

Alliant Energy in Columbia County

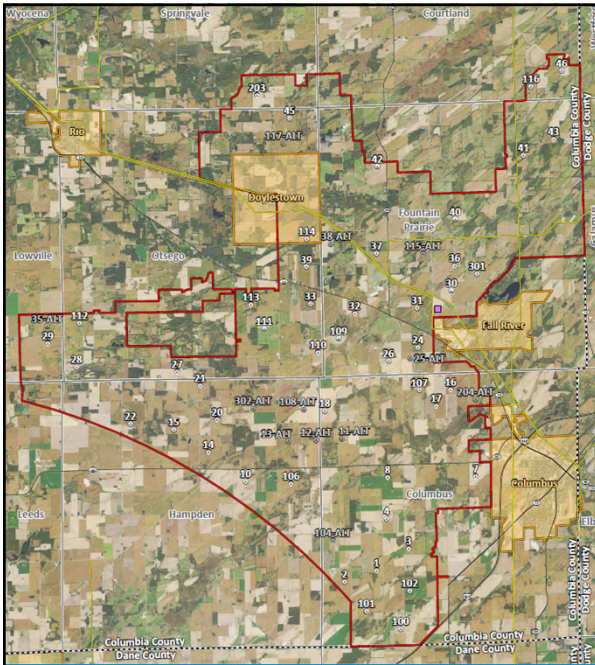
A balanced energy mix to deliver reliable, affordable energy to all customers



4



4



Columbia Wind Project Overview

Characteristics

- 47 turbines
- 277 megawatts
- Energy equivalent of up to 100k homes

Minimizing disturbance

- Less than 2 acres per turbine
- ~98% of land in project boundary undisturbed by construction
- Continuing to engage landowners and to refine construction planning and minimize disturbance

5



5

Why Columbia County?

- Long-term community relationships
- Committed landowner partnerships
- Wind fits well with agriculture
- Solid wind resource
- Cost-effective grid connection



6

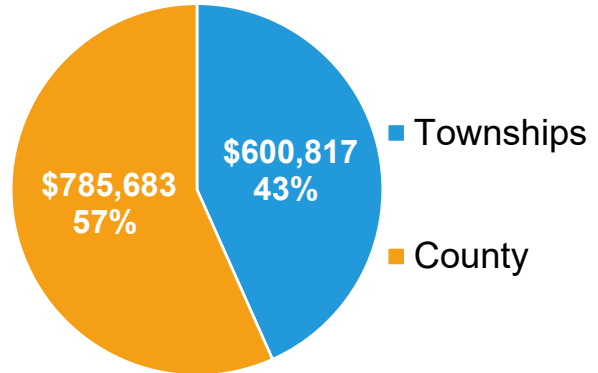


6

Columbia Wind Community Benefits

- **\$1M+** in annual Shared Revenue to the county and local communities
 - **\$41.5M+** over the life of the project
 - **\$23.4m** NPV of County Shared Revenue
- **\$225M+** in Wages, Benefits, New Tax Revenue, and Landowner Payments
- **Nearly 200** construction jobs and **six** permanent local wind techs
- Commitment to community by enabling growth

Annual Shared Revenue



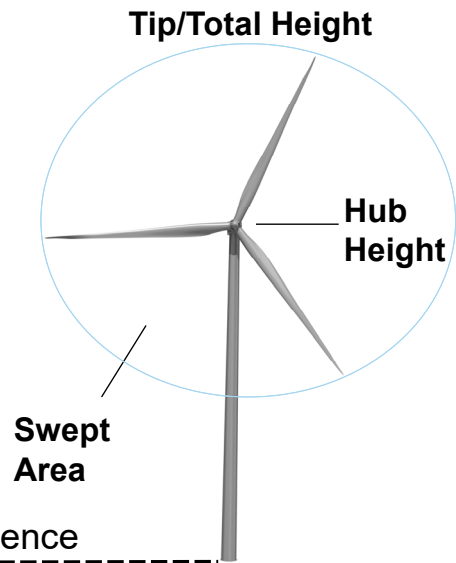
7

7

Turbine Technology

Nordex N163-5.9MW

Category	Nordex Machine
Tip Height (ft)	677.5
Hub Height (ft)	410
Blade Length (ft)	261.6
Swept Area (sq ft)	225,000
Megawatts	5.9
Homes Powered	2,130



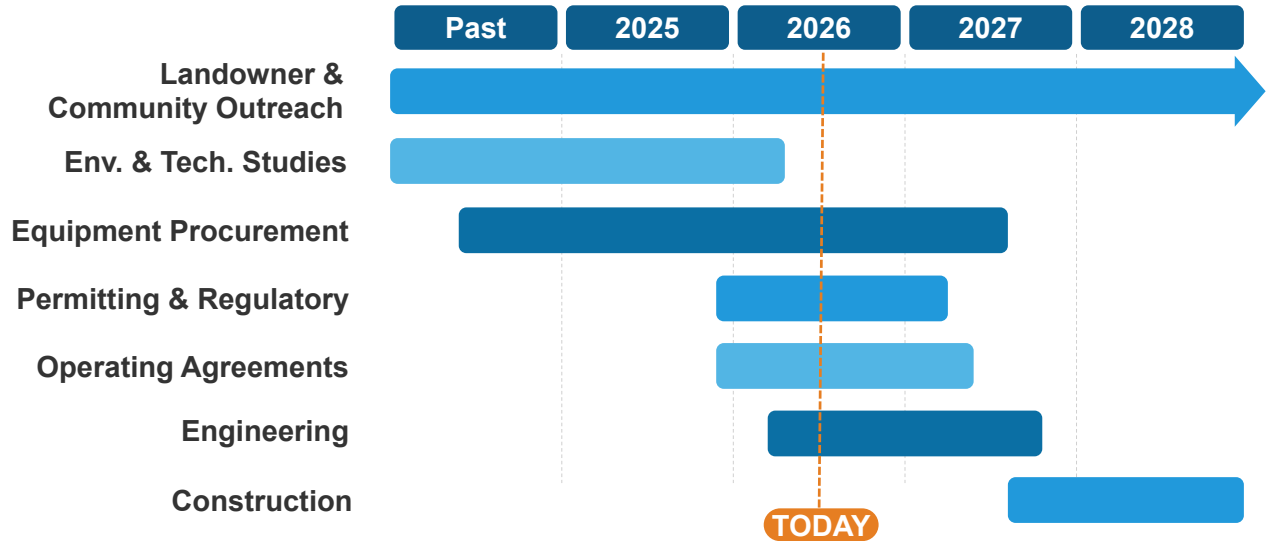
Greater than 1,400 feet from a residence



8

8

Projected Timeline



9



9

Operating Agreements

Purpose:

- Define elements of project construction, including the rights and protections, for the townships and county
- Road Use, Drainage Protection, Emergency Response, and Decommissioning Plans

Goals:

- Present to townships and county
- Build/enhance relationships
- Common ground and consensus between all parties

Jurisdiction
Columbia County
Town of Columbus
Town of Otsego
Town of Hampden
Town of Courtland
Town of Lowville
Town of Springvale
Town of Fountain Prairie

10



10

COMMON QUESTIONS



11

Sound and Shadow: What You Can Expect

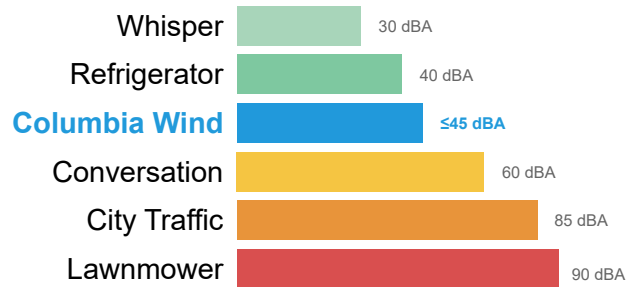
SOUND

State code: 50 dBA daytime / 45 dBA nighttime
Post-construction monitoring and a formal complaint process are required by state code
Our goal: 45 dBA or less at all times (day and night)

SHADOW FLICKER

State code: No more than 30 hours/year, with mitigation to 20 hours
Our goal: Limit to 20 hours/year using shadow-module technology that automatically curtails the turbine

How Loud Is a Wind Turbine?



**Code generalized for brevity and context*



12

12

Notices and Outreach

What's Required

State code* requires written notification at least 90 days before filing an application to all residents within 1 mile of a proposed turbine.

We go further – notifying everyone within 1 mile of the entire project boundary, not just individual turbines.

**Code generalized for brevity and context*

How We Keep You Informed

- Email updates – share your contact info so nothing gets missed
- Project website with the latest information, timelines, and contact details
- Local office and public events for face-to-face conversations
- Ongoing partnership with local and regional organizations

Have updated contact info? Let us know — we want to make sure we reach you!

13



13

Decommissioning / End of Project-life

- **We are following the state process, plus...**
- **Our goal:** Full recyclability of wind turbines and equipment, including blades



14



14

Environmental

- **Embracing the Environmental Impact Statement through the Wisconsin DNR**
- **Our goal:**
 - 1) Using a variety of means and methods, we will avoid, minimize, and monitor (before and after construction)
 - 2) Consult with State and Federal agencies in the process

Development* Studies

- ✓ Critical Issues Analysis
- ✓ Eagle Surveys
- ✓ Small Bird/Avian Use Surveys
- ✓ Endangered and Species
- ✓ Bat Surveys
- ✓ Wetland Surveys
- ✓ Cultural and Historic Resources
- ✓ Geotech/Soil Surveys

*Relevant to development of a project, other studies follow for construction and final stages of design

15



15

Environmental

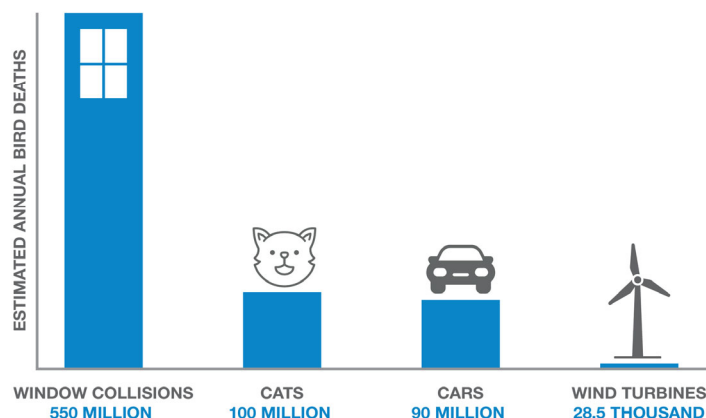
What is killing birds

Window collisions: 550 million

Cats: 100 million

Cars: 90 million

Wind turbines: 28.5 thousand



Sources: US Fish and Wildlife Service

16



16

Aircraft Detection Lighting System (ADLS)

What is it?



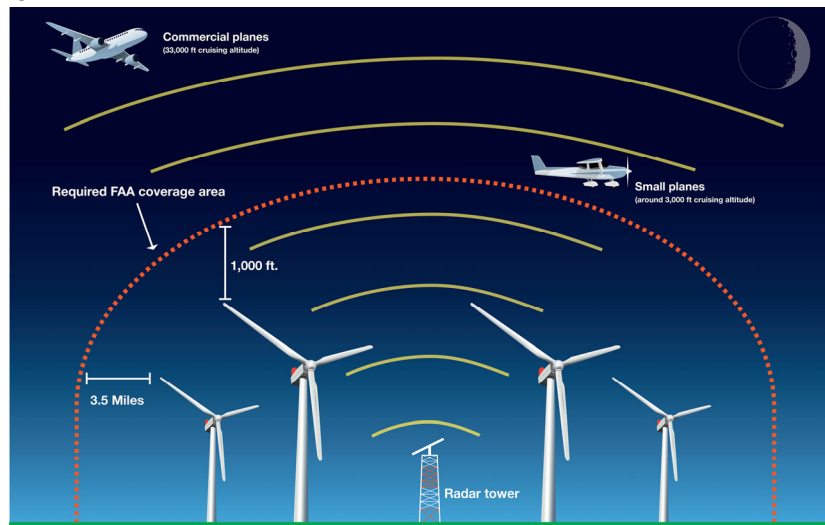
17



17

Aircraft Detection Lighting System (ADLS)

How does it work?



18



18

Contact us



Open office hours

- Wednesday mornings at our local office
- 125 East James Street, Columbus



Phone

- (608) 716-9823



Email

- CommunityAffairs@alliantenergy.com



Website

- www.alliantenergy.com/ColumbiaWind

19



19

THANK YOU



20

Shadow (visual aid)



21



21