



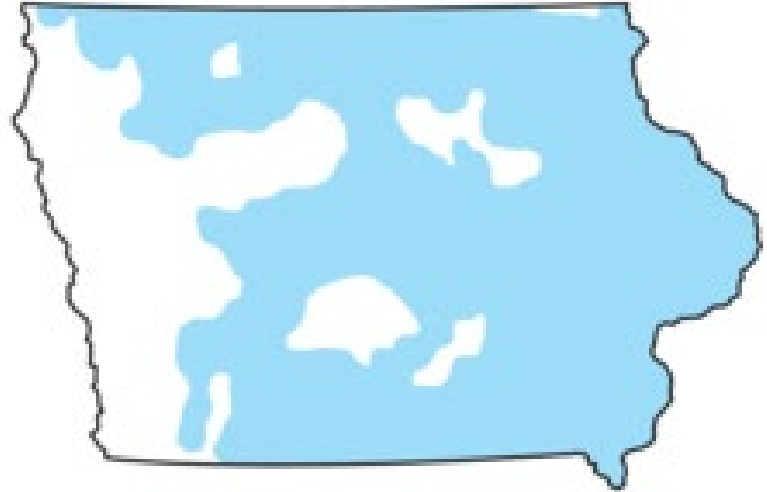
Morgan Valley Energy Center

Public Information Meeting

March 23, 2026

Alliant Energy in Iowa

- We're committed to building a secure, resilient energy future that enables growth for the communities we serve.
- We invest in a balanced energy strategy that optimizes both traditional and renewable energy generation to deliver reliable, cost-effective energy solutions and meet customer demand.
- We're proud to serve customers in over 80 Iowa counties.
 - 500,000 electric customers
 - 225,000 natural gas customers



Alliant Energy in Linn County

- Linn County is our largest load center in Iowa
- Strong presence in Cedar Rapids
- 600+ employees in Linn County
- Other generation facilities in the area include
 - Prairie Creek Generating Station
 - Cedar River Generating Station
 - Pleasant Creek Solar
 - Deer Run Battery Storage
 - Cedar Rapids Community Solar Project



Evaluating Need

- Our planning prioritizes maintaining reliable and secure energy for our customers and communities, both now and in the future.
- We invest with a long-term perspective, ensuring that projects are cost-effective for customers.
- Projects such as the Morgan Valley Energy Center must receive approval from the Iowa Utilities Commission.

Morgan Valley Energy Center

- Proposed for unincorporated Linn County, south of Highway 30 near Linn Benton Road
- Expected to consist of three Combustion Turbine (CT) generators; each CT unit to have ~240 MW capacity
- Project will use planned transmission
- Alliant Energy is developing similar facilities in its service territory, like the Bobcat Energy Center in Marshalltown



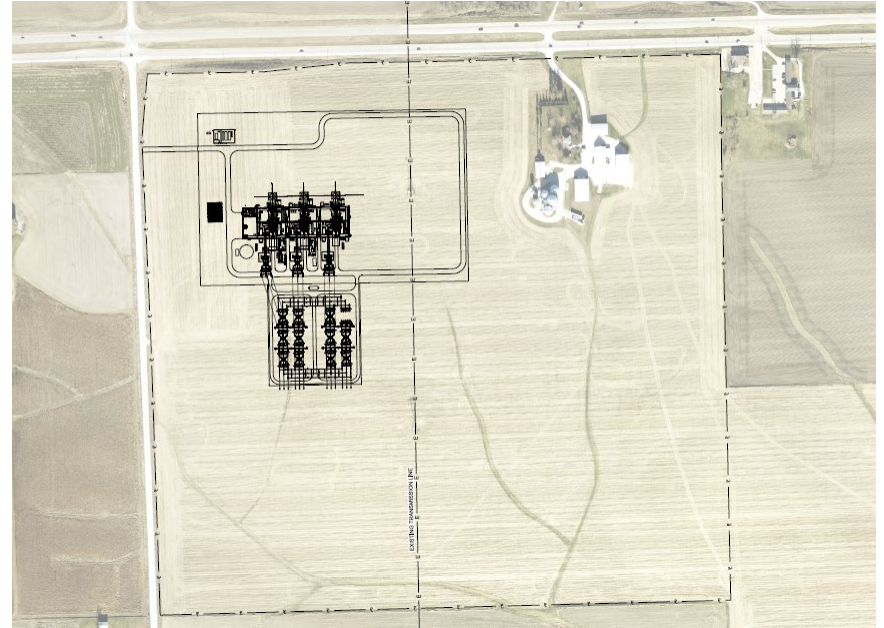
Morgan Valley Energy Center

- We continue to balance our resource mix with the addition of CT units to provide baseload generation
- CTs are:
 - Capable of 24/7 operation
 - Flexible and dispatchable
 - Low water consumption

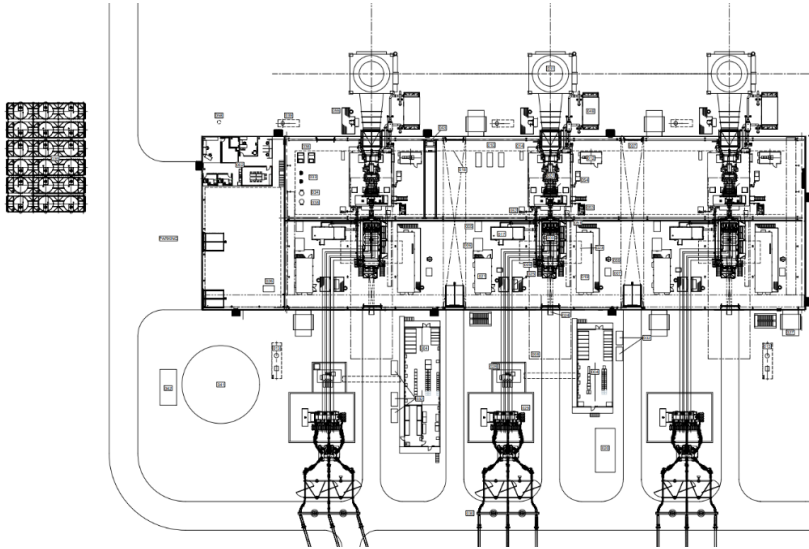


Site Selection

- Morgan Valley Energy Center is proposed to be south of Highway 30 and east of Linn Benton Road.
- During the site selection process, we account for existing transmission and infrastructure, local land use, local zoning, and proximity to our largest load center (Cedar Rapids).
- We are committed to designing the facility in a way that fits the site responsibly, minimizes impacts, and respects the surrounding area.



Project Components



- Turbine hall
- Fin fan coolers/radiators
- Maintenance building
- Admin/control building
- Exhaust stacks/bypass damper
- Auxiliary/electrical building
- Generation interconnection
- Gas yard

Environmental Review

- We anticipate no impact to wetland, endangered species or cultural resources during facility construction or operation.
- Facility design will minimize water use and wastewater discharge.
- Technical experts at the Linn County Public Health Department and Iowa DNR carefully evaluate air emissions to protect public health and the environment.
- We will meet or exceed requirements of all local, state and federal environmental permits and approvals.

Project Schedule

Permitting
2026 - 2027

Construction
2027 - 2030

Operational
2030

**Subject to change*

Questions?



Phone: 1-800-ALLIANT



Email: communityaffairs@alliantenergy.com



Media: alliantenergynews@alliantenergy.com